



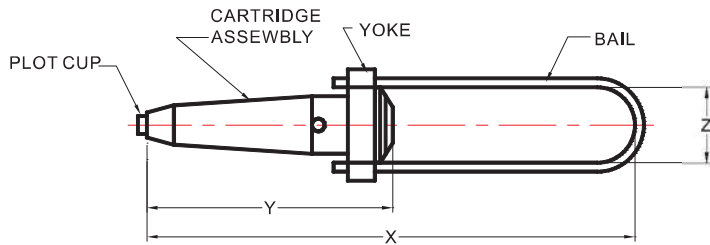
## INDEX

### SECTION 1 - AUTOMATIC CONNECTORS

GUY DEADENDS AND GUY SPLICES UNIVERSAL GRADE STRAND-----	1-1
GUY DEADENDS AND GUY SPLICES ALL GRADE STRAND-----	1-2
AUTOMATIC ALUMINUM LINE SPLICES-----	1-3
SERVICE WEDGE CLAMPS-----	1-4

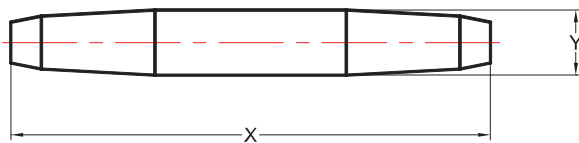


## GUY DEADENDS AND GUY SPLICES UNIVERSAL GRADE STRAND



ITEMNO.	BAIL TYPE	DIMENSIONS(INCHES)			WIRERANGE		FOR WIRE RANGES	WT/100
		X	Y	Z	INCHES	MM		
AGDE-316U	A	9.69	4.8	1.57	.145-.215	3.7-5.5	3/16"STR.	42
AGDE-14U	A	9.9	4.76	1.63	.215-.270	5.5-6.7	1/4"STR.	62
AGDE-14UL	A	13.52	4.76	1.63	.215-.270	5.5-6.7	1/4"STR.	64
AGDE-516U	A	10.45	5.38	1.73	.270-.315	6.7-8	5/16"STR.	84
AGDE-516UL	A	15.71	5.38	1.79	.270-.315	6.7-8	5/16"STR.	102
AGDE-38U	A	13.31	6.43	2	.325-.392	8.3-10	3/8"STR.	132
AGDE-38UL	A	16.97	6.43	2.12	.325-.392	8.3-10	3/8"STR.	154
AGDE-716U	A	14.61	6.85	2.18	.413-.458	10.5-11.6	7/16"STR.	172
AGDE-716UL	A	18.23	6.85	2.18	.413-.458	10.5-11.6	7/16"STR.	218
AGDE-12U	A	16.69	7.09	2.18	.455-.520	11.6-13.2	1/2"STR.	204

ABOVE CATALOG NUMBERS REPRESENT STANDARD BAIL SIZE.  
OTHER SIZES ARE AVAILABLE UPON REQUEST.

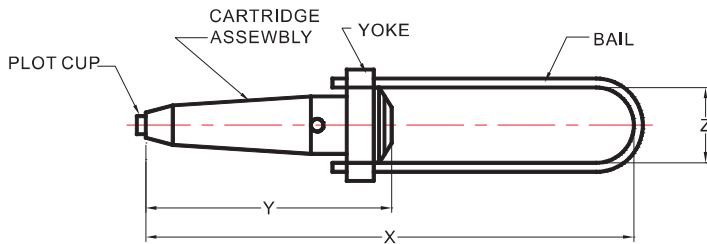


ITEM NO.	TYPE	DIMENSIONS(INCHES)		WIRE RANGE		FOR WIRE RANGES	WT/100
		X	Y	INCHES	MM		
AGS-316U	LINK	7.5	1.03	.145-.215	3.7-5.5	3/16" STR.	46
AGS-14U	LINK	7.62	1.13	.215-.270	5.5-6.7	1/4" STR.	60
AGS-516U	LINK	9.28	1.26	.270-.315	6.7-8	5/16" STR.	84
AGS-38U	LINK	10.6	1.45	.325-.392	8.3-10	3/8" STR.	132
AGS-716U	LINK	10.6	1.59	.413-.458	10.5-11.6	7/16" STR.	160
AGS-12U	LINK	10.8	1.7	.455-.520	11.6-13.2	1/2" STR.	192

FEATURES:MINIMUM HOLDING STRENGTH IS 90% RBS OF WIRE SPECIFIED.

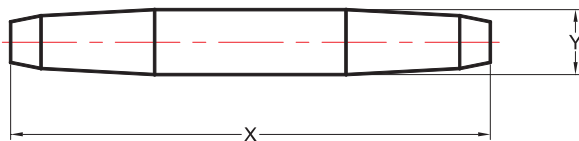


## GUY DEADENDS AND GUY SPLICES ALL GRADE STRAND



ITEM NO.	BAIL TYPE	DIMENSIONS(INCHES)			WIRE RANGE		TENSILE STRENGTH		FOR WIRE RANGES	WT/100
		X	Y	Z	INCHES	MM	KGS	LBS		
AGDE-316	A	9.08	3	1.6	.138-.217	3.5-5.5	2000	4400	3/16" STR.	20
AGDE-14	A	9.2	4.02	1.48	.240-.272	6.1-6.9	2700	6000	1/4" STR.	44
AGDE-14L	A	12.83	4.02	1.48	.240-.272	6.1-6.9	2700	6000	1/4" STR.	43
AGDE-516	A	9.36	4.47	1.48	.307-.343	7.8-8.7	4500	10080	9/32" and 5/16" STR.	72
AGDE-516L	A	13.5	4.47	1.48	.307-.343	7.8-8.7	4500	10080	9/32" and 5/16" STR.	78
AGDE-38	A	11.46	5.11	1.63	.360-.378	9.1-9.6	6300	13860	3/8" STR.	104
AGDE-38L	A	17.01	5.11	1.65	.360-.378	9.1-9.6	6300	13860	3/8" STR.	130
AGDE-716	A	14.8	6.69	2.13	.413-.449	10.5-11.4	8600	18720	7/16" STR.	176

ABOVE CATALOG NUMBERS REPRESENT STANDARD BAIL SIZE.  
OTHER SIZES ARE AVAILABLE UPON REQUEST.

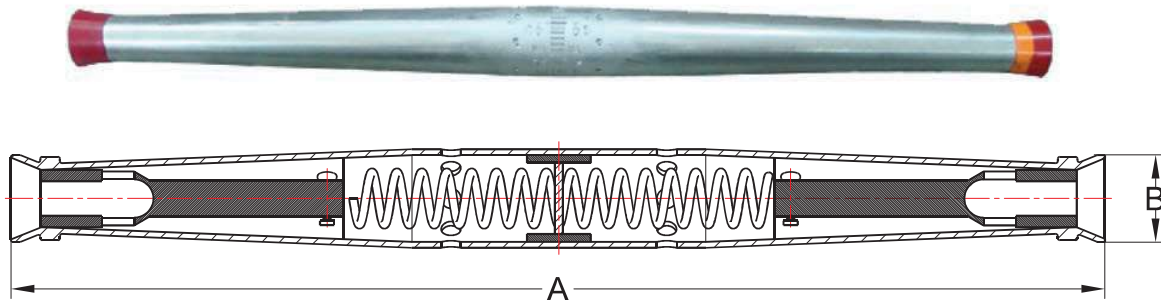


ITEM NO.	TYPE	DIMENSIONS(INCHES)		WIRE RANGE		TENSILE STRENGTH		FOR WIRE RANGES	WT/100
		X	Y	INCHES	MM	KGS	LBS		
AGS-316	LINK	5.2	0.7	.138-.217	3.5-5.5	2000	4400	3/16" STR.	16
AGS-14	LINK	6.42	0.91	.240-.272	6.1-6.9	2700	6000	1/4" STR.	30
AGS-516	LINK	7.36	1.11	.307-.343	7.8-8.7	4500	10080	9/32" and 5/16" STR.	62
AGS-38	LINK	8.27	1.29	.360-.378	9.1-9.6	6300	13860	3/8" STR.	88
AGS-716	LINK	10.8	1.59	.413-.449	10.5-11.4	8600	18720	7/16" STR.	155

FEATURES:MINIMUM HOLDING STRENGTH IS 90% RBS OF WIRE SPECIFIED.



# AUTOMATIC ALUMINUM LINE SPLICES



Catalog Number	CONDUCTOR RANGE			Conductor Diameter Range	Strand Color Guide	APPROXIMATE DIMENSIONS	
	ACSR ASTM-B232	AAAC ASTM- B399	AAC ASTM-B231			A	B
ALLS-4	#4	#4	#4	0.229-0.265	Red	13.75	0.834
ALLS-2	#2	#2	#2	0.265-0.335	Orange	13.75	0.834
ALLS-42	#2 & #4	#2 & #4	#2 & #4	0.229-0.340	Red-Orange	13.75	0.834
ALLS-10	1/0	1/0	1/0	0.365-0.425	Yellow	16.25	1.15
ALLS-20	2/0	2/0	2/0	0.425-0.475	Gray	16.25	1.15
ALLS-1020	1/0 & 2/0	1/0 & 2/0	1/0 & 2/0	0.365-0.475	Gray-Yellow	16.25	1.15
ALLS-30	3/0	3/0	3/0	0.502-0.531	Black	22.00	1.74
ALLS-40	4/0	4/0	4/0	0.531-0.585	Pink	22.00	1.74
ALLS-3040	3/0 & 4/0	3/0 & 4/0	3/0 & 4/0	0.502-0.585	Black-Pink	22.00	1.74
ALLS-266-336	266.8(18/1), 336.4(18/1)	312.8,266.8,336.4	336.4,266.8,336.4&397.5	0.580-0.724	Green	22.00	1.74
ALLS-397	397.5(18/1),477(18/1)	477&556.5	477&556.5	0.740-0.856	Blue	22.00	1.85
ALLS-477A	477(26/7)	636	636	0.835-0.878	Purple	32.28	2.24

ALL GRID POWER SPLICES ARE RATED TO HOLD A MINIMUM OF 95% OF THE RATED BREAKING STRENGTH OF THE CONDUCTOR.

**FEATURES:**

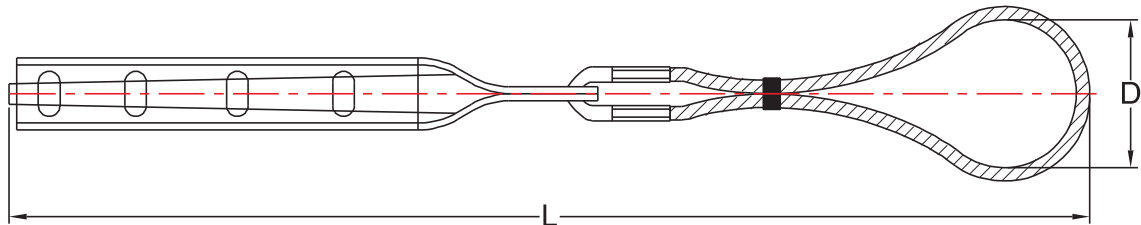
- \* FACTORY INSTALLED INHIBITOR
- \* ANSI C119.4 FULL TENSION CLASS A CONNECTOR
- \* COLOR CODED END CAPS FOR EASY CONDUCTOR IDENTIFICATION
- \* EASY AND FAST TO SPLICE OVERHEAD CONDUCTORS

**MATERIAL:**

- \* HIGH STRENGTH ALUMINUM ALLOY TUBING
- \* INSIDE JAWS ARE ALUMINUM ALLOY



# SERVICE WEDGE CLAMPS



CATALOG NUMBER	WIRE RANGE ACSR	WIRE RANGE ALUMINUM	WIRE RANGE AAAC	TOTAL LENGTH INCHES	INSIDE BALL DIMENSIONS INCHES
SWC62-1	#6-#2	6SOL.-1STR	#4-#1/0	12"	2 3/8"
SWC20-1	#6-#2	6SOL.-1STR	#4-#1/0	12 1/2"	2 3/8"
SWC40-1	#6-#2	6SOL.-1STR	#2/0-#4/0	12 3/4"	2 3/8"

THE ABOVE CLAMPS ARE USED PRIMARILY IN SERVICE DROP APPLICATIONS. WHERE STRAIN RELIEF IS NEEDED. THEN CAN ALSO BE USED FOR DEADENDING DROP WIRE AS WELL AS ADJUSTING THE SAG IN DROP WIRES.

THE ABOVE SERVICE WEDGE CLAMPS ARE FURNISHED WITH A RIGID STAINLESS STEEL BAIL. FLEXIBLE BAILS ARE ALSO AVAILABLE JUST ADD THE SUFFFIX "F" TO OUR PART NUMBER. (EXAMPLE:SWC62-1F)